



OpenMax Call Sequences
OHA 2.1, rev. 1
Feb 25, 2009



Table of Contents

1. Introduction.....	4
2. General Comment about Call Diagrams.....	4
3. OpenCore and OMX core/component Interaction	4
3.1. OMX Core initialization.....	4
3.2. OMX Component instantiation, capabilities and port indices.....	6
3.3. OMX component input and output buffer negotiation.....	10
3.4. OMX Transition Loaded->Idle State.....	12
3.5. Transition to “Executing” state and data exchange	14
3.6. Pausing	16
3.7. Port flush (if applicable).....	18
3.8. Stopping/Transition to “Idle” state.....	20
3.9. OMX Component Transition from Idle->Loaded State and De-initialization	22
3.10. OMX Core De-initialization.....	24

List of Figures

Figure 1: OMX Core Initialization.....	5
Figure 2: OMX component instantiation through OMX_GetHandle.....	9
Figure 3: OMX component parameter negotiation.....	11
Figure 4: OMX component state transition from OMX_StateLoaded->OMX_StateIdle.....	13
Figure 5: OMX component state transition from OMX_StateIdle->OMX_StateExecuting and data exchange.....	15
Figure 6: OMX component state transition from OMX_StateExecuting->OMX_StatePause and back.....	17
Figure 7: OMX component port flush procedure.....	19
Figure 8: OMX component state transition from OMX_StateExecuting/Paused ->OMX_StateIdle.....	21
Figure 9: OMX component state transition from OMX_StateIdle->OMX_StateLoaded.....	23

1. Introduction

There are several ways to integrate a codec into the PV OpenCore multimedia framework including as a compressed media I/O component, as a node, and as an OpenMax component integrated into the OpenMax codecs nodes that are part of the framework. Many codecs, especially those that include hardware acceleration, implement the OpenMax IL interface making the OpenMax interface the most straightforward method of integration in those cases.

This document describes the details and sequence diagrams to help integration between the PV framework and 3rd party OpenMax IL 1.1 compliant components (encoders and decoders). The sequence diagrams cover the interaction between the PV OpenCore framework and the 3rd party OMX core as well as the communication between OpenCore and OMX components. This includes OMX component enumeration, instantiation of an OMX component, setting of various parameters, input and output port configuration, destruction of the OMX component, etc. Throughout this document the names PV framework and OpenCore will be used interchangeably.

2. General Comment about Call Diagrams

To improve clarity, the call diagrams in this document use simplified naming of calls and do not provide the full list of OMX call parameters. For full list of OMX call parameters, please refer to the OpenMax IL 1.1 specification.

3. OpenCore and OMX core/component Interaction

The interaction can be divided into several stages described in the following sections. The sections are ordered to generally follow the sequence of APIs in a typical use-case.

3.1. OMX Core initialization

The following steps take place when the OMX core is initialized:

- OMX_Init is called
- The PV framework enumerates all OMX components by querying their names until OMX core returns "OMX_ErrorNoMore". For each OMX component name, PV framework queries the OMX component role(s) and builds a registry of available components and their roles.

This interaction is shown in Figure 1.

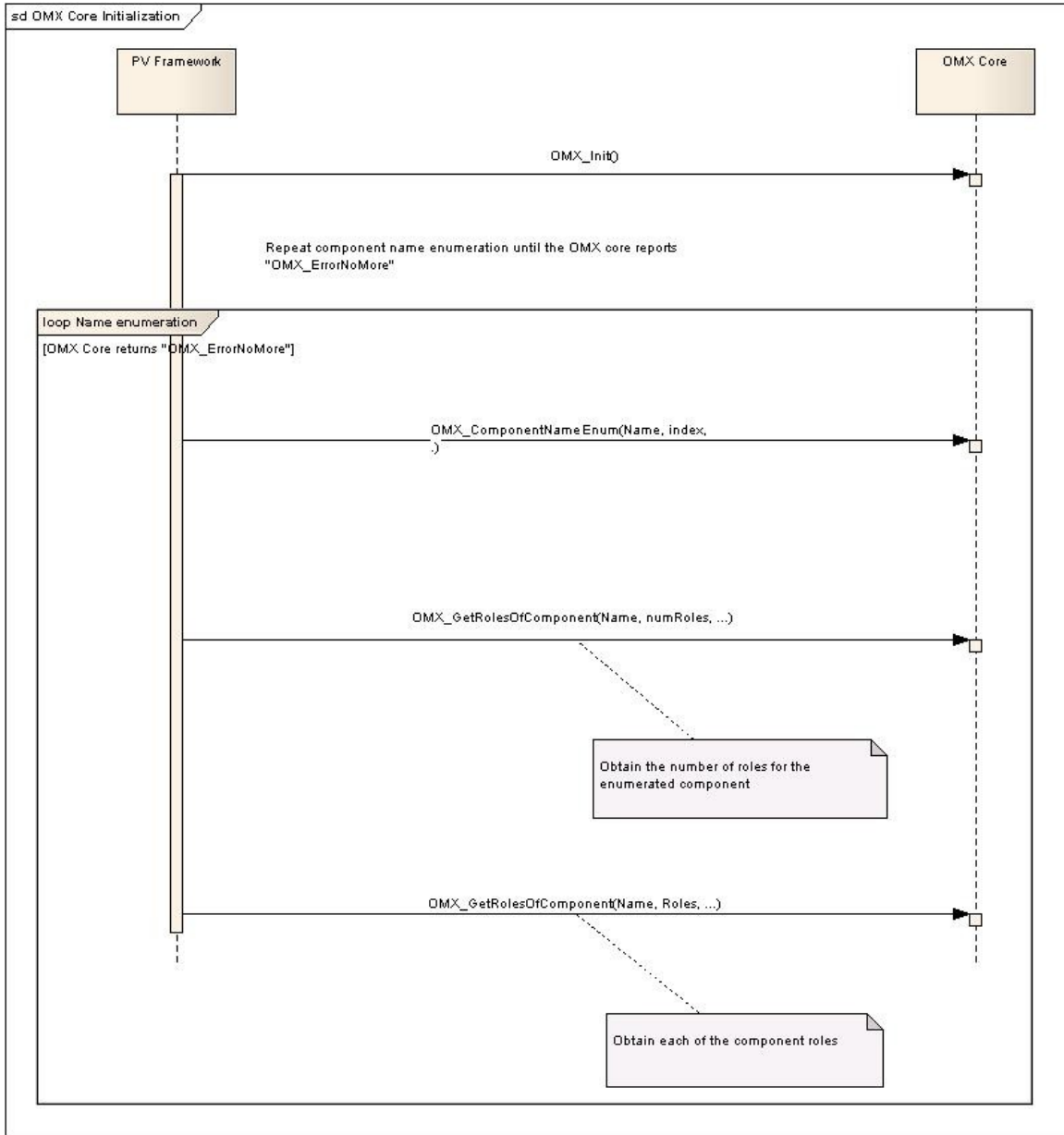


Figure 1: OMX Core Initialization

3.2. OMX Component instantiation, capabilities and port indices

After the OMX core is initialized, the next step is typically to instantiate a specific component and enumerate capabilities and port indices. The PV framework will:

- use the OMX_GetHandle call to instantiate the desired OMX component (based on the previously acquired component names and roles)
- use the OMX_GetParameter call with a PV proprietary index "PV_OMX_CAPABILITY_TYPE_INDEX" to obtain the capabilities of the OMX component. In case of components that are not fully OpenMax compliant, or in the case where the OpenMax spec is ambiguous, the capabilities determine whether the OMX component supports "UseBuffer" or "AllocateBuffer" calls on input/output ports or whether the OMX component supports partial frames etc.
NOTE: If OMX component returns "OMX_ErrorUnsupportedIndex" for this index (or anything other than "OMX_ErrorNone"), the PV framework assigns default values for component capabilities.
- use the OMX_GetParameter call with "OMX_IndexVideoInit" for video components or "OMX_IndexAudioInit" for audio components, to obtain the number of available ports on the OMX component
- loop over available ports to find the index of the input port (based on the port direction supplied by the component)
- loop over available ports to find the index of the output port (based on the port direction supplied by the component).

This interaction (for a video OMX component) is shown in Figure 2.

Note:

Index "PV_OMX_CAPABILITY_TYPE_INDEX" is defined as:

```
#define PV_OMX_COMPONENT_CAPABILITY_TYPE_INDEX 0xFF7A347
```

The OMX_GetParameter call expects the following structure to be filled for this index:

```
typedef struct PV_OMXComponentCapabilityFlagsType
{
    //////////////// OMX COMPONENT CAPABILITY RELATED MEMBERS
    OMX_BOOL iIsOMXComponentMultiThreaded;
    OMX_BOOL iOMXComponentSupportsExternalOutputBufferAlloc;
    OMX_BOOL iOMXComponentSupportsExternalInputBufferAlloc;
    OMX_BOOL iOMXComponentSupportsMovableInputBuffers;
    OMX_BOOL iOMXComponentSupportsPartialFrames;
    OMX_BOOL iOMXComponentUsesNALStartCode;
    OMX_BOOL iOMXComponentCanHandleIncompleteFrames;
    OMX_BOOL iOMXComponentUsesFullAVCFrames;
} PV_OMXComponentCapabilityFlagsType;
```

The capabilities parameters default values are:

`iIsOMXComponentMultiThreaded` – the default value is `OMX_TRUE`.

While it is expected that an OMX component would typically run in a separate thread (different from the thread in which PV framework is running), it is possible that the OMX component is implemented so that it runs in the same thread as PV framework (e.g., via synchronous calls).

`iOMXComponentSupportsExternalOutputBufferAlloc` – the default value is `OMX_TRUE`.

OMX specification mandates that OMX components support externally allocated output buffers (i.e., `OMX_UseBuffer` call for output buffers). If the component cannot support this, the component needs to communicate this to the PV framework (by setting this value to `OMX_FALSE`) so that “`OMX_AllocateBuffer`” call can be used by the PV framework instead.

`iOMXComponentSupportsExternalInputBufferAlloc` – the default value is `OMX_TRUE`. OMX specification mandates that OMX components support externally allocated input buffers (i.e., `OMX_UseBuffer` call for input buffers). If the component cannot support this, the component needs to communicate this to the PV framework (by setting this value to `OMX_FALSE`) so that “`OMX_AllocateBuffer`” call can be used by the PV framework instead.

`iOMXComponentSupportsMovableInputBuffers` – the default value is `OMX_TRUE`.

If OMX buffers are externally allocated, it is possible to decouple the OMX buffer headers (`OMX_BUFFERHEADERTYPE`) and the actual data buffers (“`pBuffer`”) to allow for more flexibility and optimize performance. In other words, to make OMX buffers “movable”, when passing an input buffer to the OMX component, the “`pBuffer`” field in the `OMX_BUFFERHEADERTYPE` in a particular OMX buffer header does not always have to point to the same data buffer. Thus, it is possible to allocate more actual data buffers to circulate in the framework and to attach them to the OMX buffer header only when it is necessary to pass them into the OMX component.

If the OMX component requires that an OMX buffer header always points to the exact same data buffer, then `iOMXComponentSupportsMovableInputBuffers` field needs to be set to `OMX_FALSE`.

`iOMXComponentSupportsPartialFrames` – the default value is `OMX_TRUE`.

OMX specification mandates that OMX components support arbitrary data packaging inside buffers, including the case where a single frame/NAL/decoding unit is split into multiple OMX buffers. PV framework supplies the “`OMX_BUFFERFLAG_ENDOFFRAME`” markers to facilitate easy partial frame assembly. However, if OMX component is not capable of supporting/assembling partial frames, i.e., if OMX component requires PV framework to perform partial frame assembly and supply the OMX component with a full input frame/NAL, then `iOMXComponentSupportsPartialFrames` flag needs to be set to `OMX_FALSE`.

NOTE: setting this flag to `OMX_FALSE` may affect performance

`iOMXComponentUsesNALStartCode` – the default value is `OMX_FALSE`.

This flag affects H264 decoding. PV framework provides all the information needed to reconstruct H264 NALs (via the size of all OMX buffers & `OMX_BUFFERFLAG_ENDOFFRAME` flags).

Thus, there is no need for the omx component to parse the bit-stream parsing and the 0x0001 NAL start code to be provided. If the OMX H264 component and the underlying h264 decoder still rely on bit-stream parsing and require the h264 bit-stream to include the 0x0001 NAL start codes, then `iOMXComponentUsesNALStartCode` flag needs to be set to `OMX_TRUE`.

`iOMXComponentCanHandleIncompleteFrames` – the default value is `OMX_TRUE`.

It is possible that portions of the bit-stream are missing (e.g., due to packet loss). It is assumed that OMX component and the underlying codec can gracefully handle such cases. If the OMX component/codec cannot handle incomplete frames, then “iOMXComponentCanHandleIncompleteFrames” flag needs to be set to OMX_FALSE. This is especially important for the case when “iOMXComponentSupportsPartialFrames” flag is also set to OMX_FALSE, since this is the case where OMX component itself is not performing partial frame assembly, i.e., this is the case where PV framework provides assembled frames/NALs to the OMX component and needs to be informed whether incomplete frames can be safely fed to the OMX component.

“iOMXComponentUsesFullAVCFrames” - the default value is OMX_FALSE. This flag determines whether NAL mode or Frame mode is used in case of AVC. AVC data can be provided to the OMX component in two different modes depending on the setting of the capability flag “iOMXComponentUsesFullAVCFrames”. The default mode is NAL mode (when the flag is set to OMX_FALSE) and in this mode, the OpenCore framework provides a single or a partial AVC NAL in an OMX input buffer at a time. In the Frame mode (when the flag is set to OMX_TRUE) – OpenCore framework accumulates AVC NALs and provides the OMX component with one full AVC frame placed into an OMX input buffer. NAL boundaries are communicated to the OMX component using OMX_OTHER_EXTRADATA structures. If both “iOMXComponentUsesFullAVCFrames” and “iOMXComponentUsesNALStartCodes” capability flags are set to OMX_TRUE – then NAL boundaries inside the frame can be inferred by parsing the inserted NAL start codes. In such a case – OMX_OTHER_EXTRADATA structures are not used. The details about the usage of AVC frame mode and OMX_OTHER_EXTRADATA structures are provided in the document “OMX Core Integration Guide” in section 5.9.

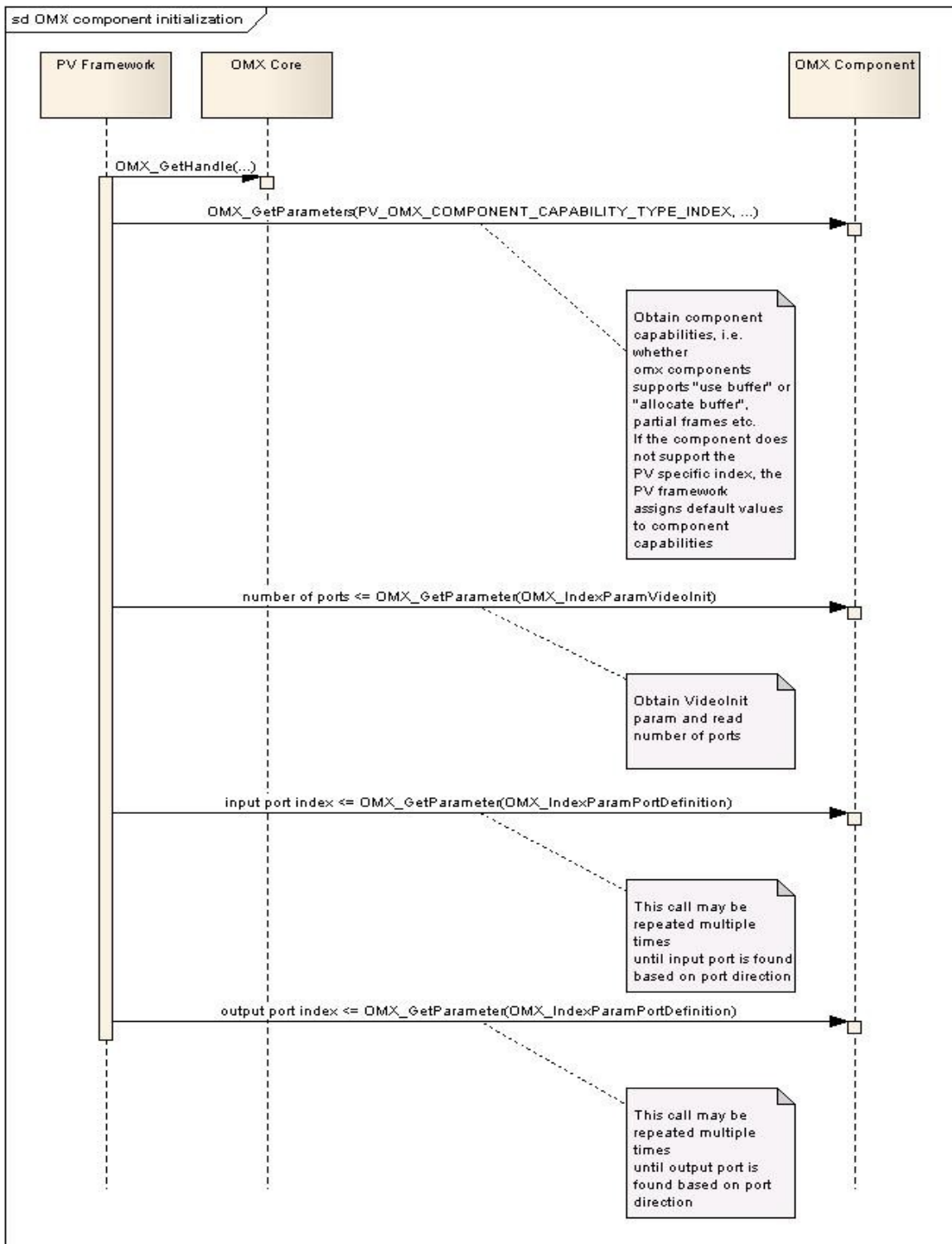


Figure 2: OMX component instantiation through OMX_GetHandle

3.3. OMX component input and output buffer negotiation

Before any data can be exchanged, parameters for the input and output buffers need to be negotiated. To accomplish this, the PV framework:

- uses OMX_GetParameter call to obtain the input port buffer parameters (minimum/actual number of buffers, buffer size etc.)
- verifies the validity of input buffer parameters (and modifies parameters such as frame width/height and possibly the number of buffers)
- uses OMX_SetParameter call to set the input buffer parameters
- uses OMX_GetParameter call to obtain the output port buffer parameters (minimum/actual number of buffers, buffer size etc.)
- verifies the validity of output buffer parameters (and modifies parameters such as frame width/height etc., and possibly the number of buffers)
- uses OMX_SetParameter call to set the output buffer parameters

This interaction is shown in Figure 3.

Assumptions:

1) Buffer size assumptions:

In case of encoder components, final OMX output buffer size that is allocated may be smaller than the maximum frame size required by the profile/level/target bitrate etc. due to memory consumption considerations. In such a case, OMX encoder components shall be able to divide the output bitstream frame/NAL into multiple OMX buffers and mark the final portion of such a partial frame/NAL using the "OMX_BUFFERFLAG_ENDOFFRAME".

In case of decoder components, final OMX input buffer size that is allocated may be smaller than the maximum frame size required by the profile/level/target bitrate etc. due to memory consumption considerations. PV provides input buffers that are marked by "OMX_BUFFERFLAG_ENDOFFRAME" when appropriate. If an input buffer contains a full frame (NAL unit in case of H264) or multiple full frames, the buffer flag "OMX_BUFFERFLAG_ENDOFFRAME" will be set for that buffer. In case when a full frame/NAL does not fit into one OMX input buffer, the frame/NAL data will be split into multiple OMX buffers. The buffers that contain pieces of the frame/NAL, the "OMX_BUFFERFLAG_ENDOFFRAME" flag bit is set to 0. The buffer carrying the last piece of the partial frame/NAL will have the flag "OMX_BUFFERFLAG_ENDOFFRAME" bit set to 1. In this way, the component can easily reconstruct frames/NALs without having to parse the bitstream data.

In cases when OMX decoder components are not capable of assembling partial frames/NALs, the PV framework will be able to perform the task of assembly. Whether this is possible or not is defined by setting OMX component capabilities which was described in the previous section.

2) Number of input/output buffers:

The framework may have the desire to allocate more input/output buffers than what the OMX component requires in order to provide optimized performance (e.g., in case of the decoder output buffers or encoder input buffers – some buffers need to be outstanding to allow extra buffering in the framework.) While these buffers are outstanding, they cannot be sent to the OMX component.

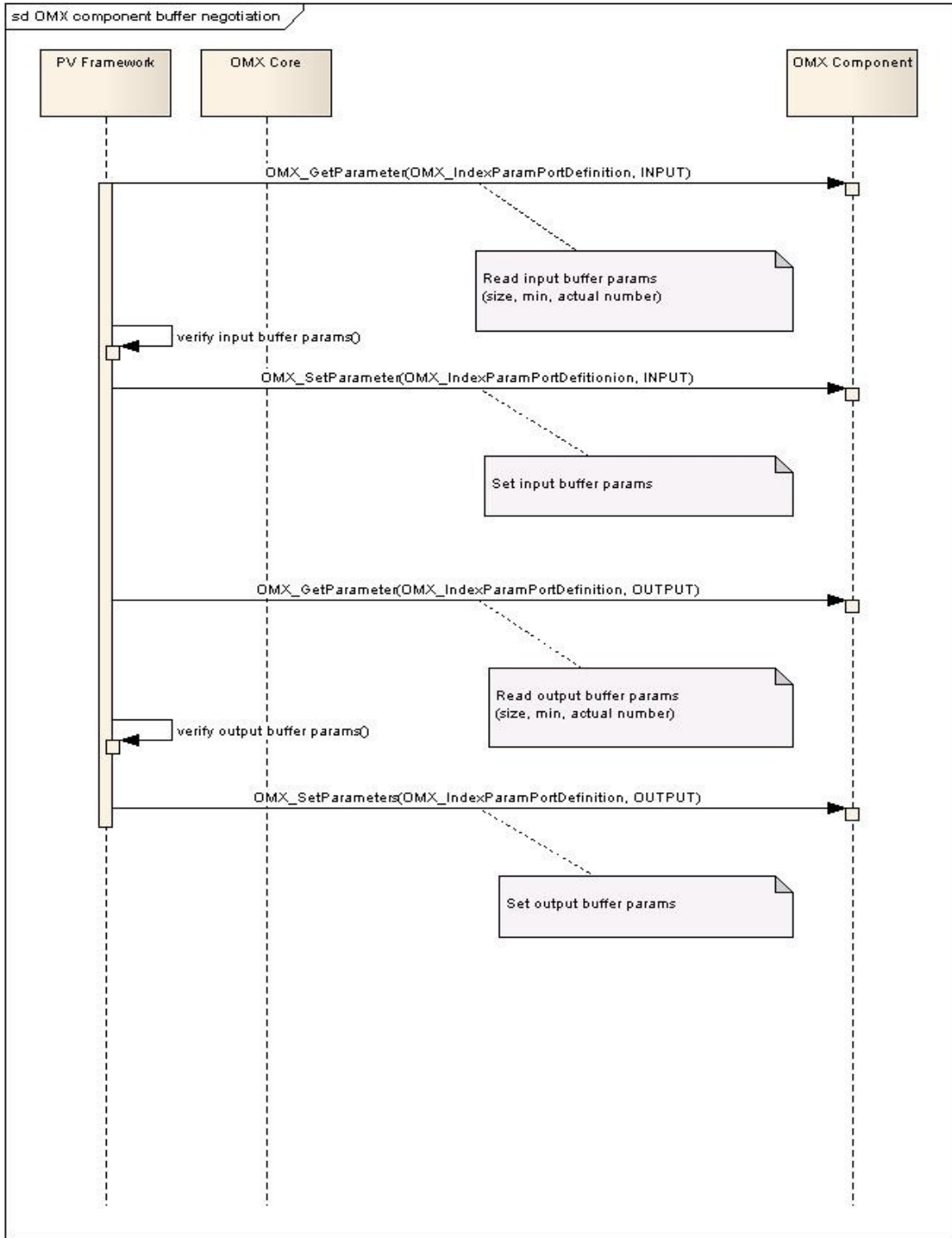


Figure 3: OMX component parameter negotiation

3.4. OMX Transition Loaded->Idle State

The buffer allocation is handled as part of the allocation to the Idle state. During this transition, PV Framework:

- Issues command to the OMX component to change state from OMX_StateLoaded to OMX_StateIdle via “OMX_SendCommand” call
- Issues a series of either “OMX_UseBuffer” calls or “OMX_AllocateBuffer” calls to the OMX component. The call is used NumInputBuffer times for input port, and NumOutputBuffers for the output port.
- Waits for the EventHandler callback to arrive from the component which notifies the framework that the component state transition is complete (OMX_EventCmdComplete).

This interaction is shown in Figure 4.

Assumptions and preferences:

According to OMX specification, the compliant OMX component must be able to support both OMX_UseBuffer and OMX_AllocateBuffer calls. However, if due to internal component limitations, this is not possible, the component should be able to communicate its capabilities (described in the previous section).

It is preferred that INPUT buffers are allocated outside the OMX component so that input data can be passed into the component without using the unnecessary memory copies (i.e., that the OMX_UseBuffer call is made for input buffers).

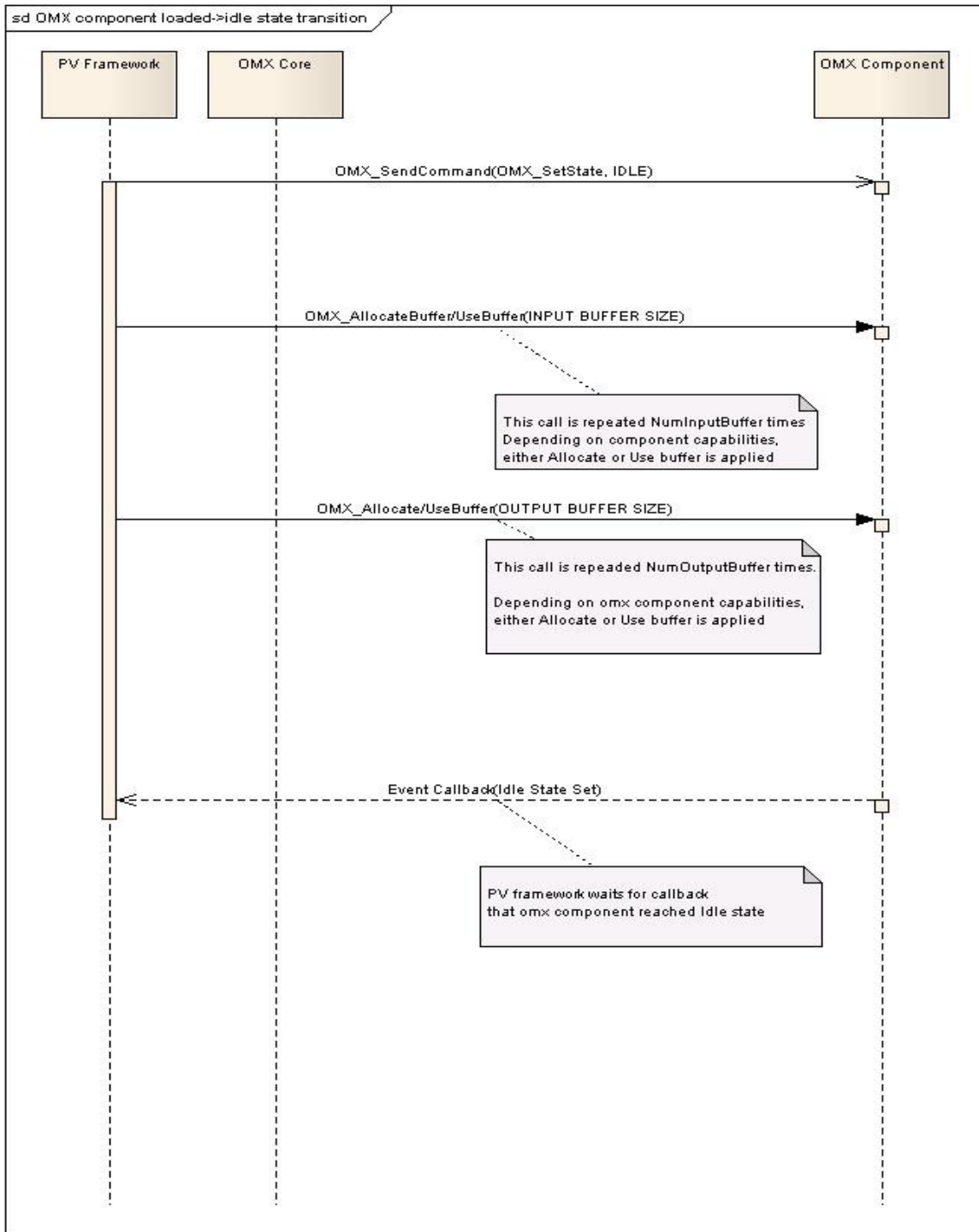


Figure 4: OMX component state transition from OMX_StateLoaded->OMX_StateIdle

3.5. Transition to “Executing” state and data exchange

The transition to executing starts the active processing of data. In this step, PV Framework:

- Issues command to the OMX component to change state from OMX_StateIdle to OMX_StateExecuting via “OMX_SendCommand” call
- Waits for the EventHandler callback to arrive from the OMX component which notifies the framework that the state transition is complete (OMX_EventCmdComplete).
- Sends input buffers via “OMX_EmptyThisBuffer” calls and output buffers via “OMX_FillThisBuffer” calls to the OMX component. The component returns buffers using appropriate callbacks.

This interaction is shown in Figure 5.

Notes:

1) If at any time the OMX component has ownership of all the input buffers (i.e., all buffers have been passed into the component with EmptyThisBuffer calls), then no further input buffers can be sent until the component returns at least one buffer through EmptyBufferDone callback. Similarly, if the OMX component holds on to all output buffers (NumOutputBuffers), the PV framework cannot continue processing the output until at least one of the OMX output buffers is returned by the component.

2) The OMX component shall not return the same buffer multiple times in a row without the PV framework giving the buffer back to the component (i.e., once the component returns a buffer, it cannot use that same buffer until the PV framework issues OMX_FillThisBuffer/EmptyThisBuffer call for that buffer). This point is a natural consequence of the buffer ownership implied by the OMX buffer exchange APIs.

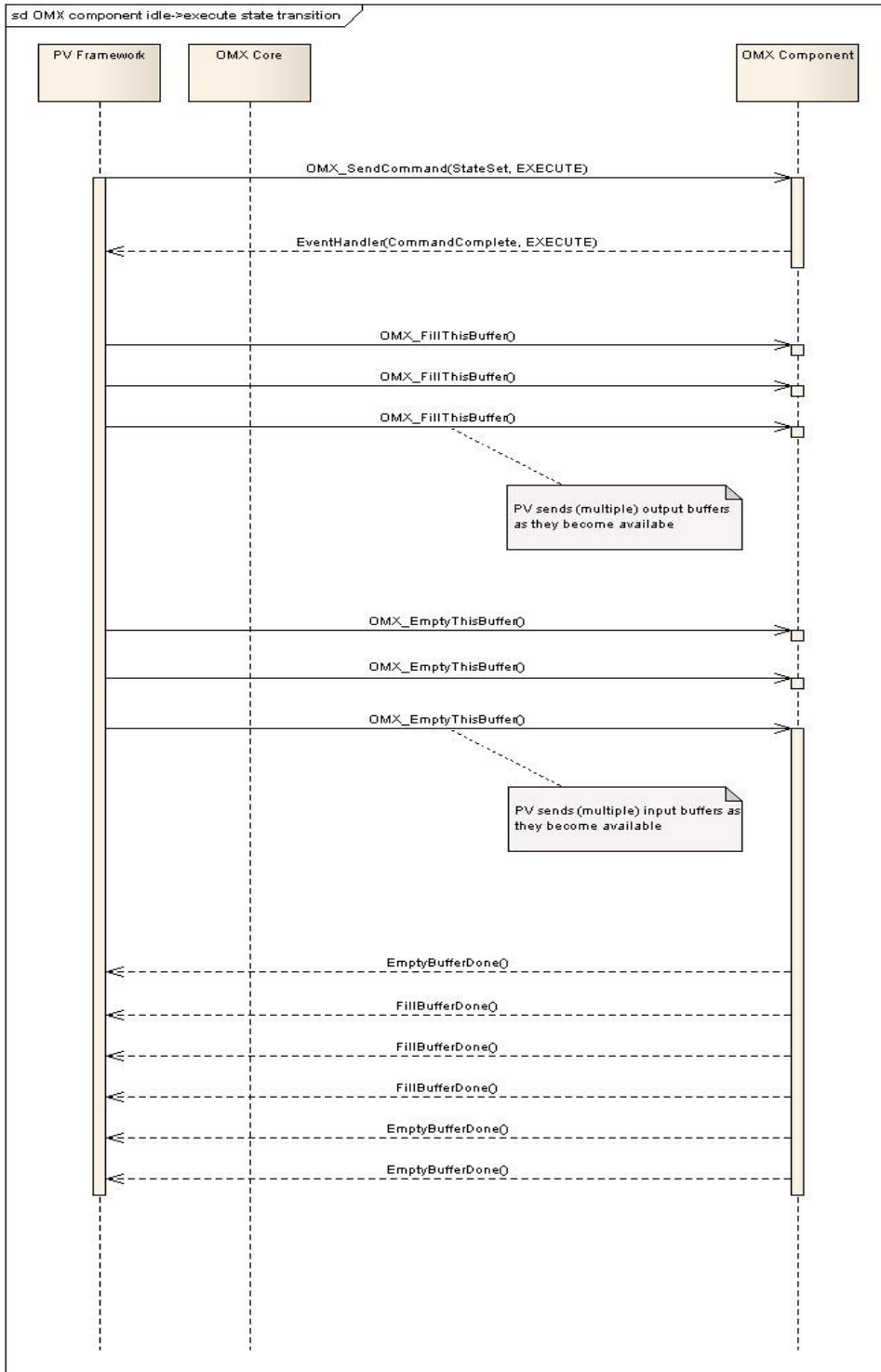


Figure 5: OMX component state transition from OMX_StateIdle->OMX_StateExecuting and data exchange

3.6. Pausing

A common use-case involves pausing and resuming. In this case, the PV framework:

- Issues command to the OMX component to change state from OMX_StateExecuting to OMX_StatePause via “OMX_SendCommand” call
- Waits for the EventHandler callback to arrive from the OMX component which notifies the framework that the state transition is complete (OMX_EventCmdComplete).

After issuing the pause command to the OMX component, the PV framework immediately stops sending OMX input/output buffers to the component.

In order to resume, the PV framework:

- Issues command to the OMX component to change state from OMX_StatePause to OMX_StateExecuting via “OMX_SendCommand” call
- Waits for the EventHandler callback to arrive from the OMX component which notifies the framework that the state transition is complete (OMX_EventCmdComplete).

The PV framework may resume sending OMX input/output buffers to the component (as buffers become available) after receiving the callback from the component that “Executing” state is reached.

This interaction is shown in Figure 6.

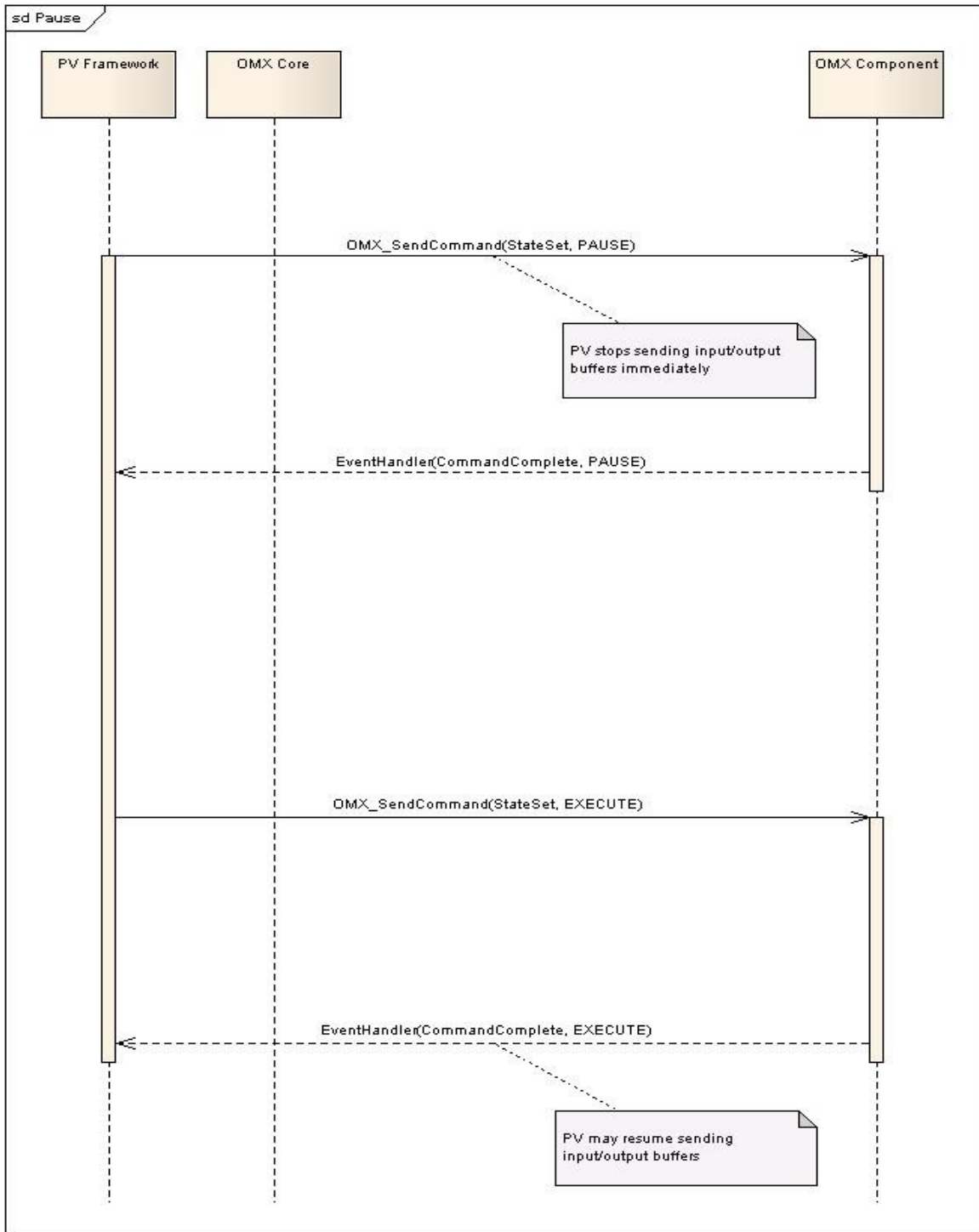


Figure 6: OMX component state transition from OMX_StateExecuting->OMX_StatePause and back

3.7. Port flush (if applicable)

The port flush call is typically used with a decoder component during repositioning so that any queued data is discarded. In this situation, the PV framework:

- Issues a command to the OMX component to flush ALL (i.e., both) ports via “OMX_SendCommand” call.
- Waits for the TWO EventHandler callback to arrive from the OMX component input and output ports which notifies the framework that the OMX component has completed flushing ports (OMX_EventCmdComplete).

The PV framework stops sending OMX input/output buffers to the component immediately after issuing the flush command. The PV framework may resume sending input/output buffers to the component after receiving the 2nd callback.

The order in which ports are flushed and reported flushed is irrelevant.

This interaction is shown in Figure 7.

Port flush may also be used prior to OMX IL client disabling the OMX component port in case of dynamic port reconfiguration procedure.

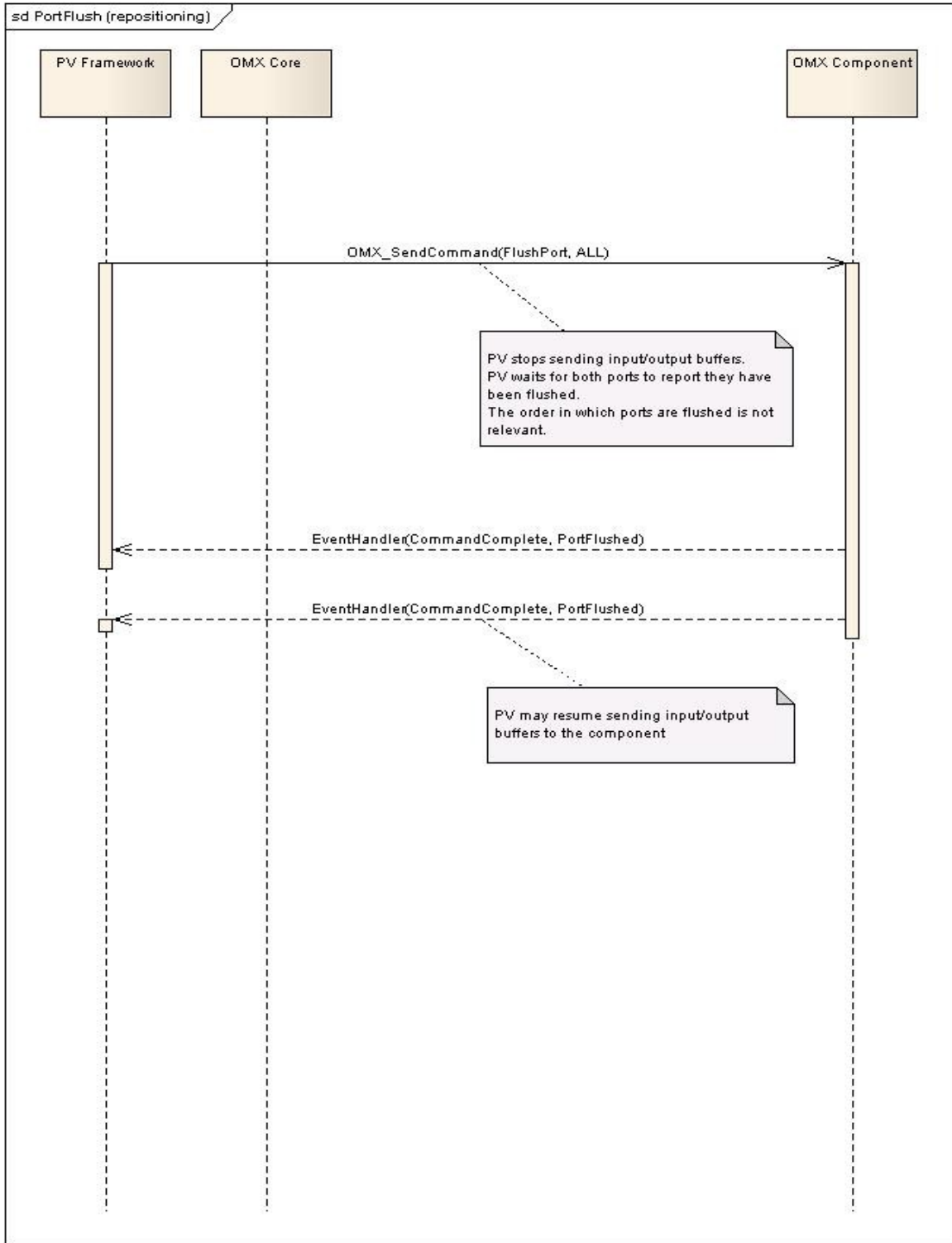


Figure 7: OMX component port flush procedure

3.8. Stopping/Transition to “Idle” state

In order to stop processing, the PV framework:

- Issues command to the OMX component to change state from OMX_StateExecuting or OMX_StatePause to OMX_StateIdle via “OMX_SendCommand” call
- Waits for the EventHandler callback to arrive from the OMX component which notifies the framework that the state transition is complete (OMX_EventCmdComplete).

This interaction is shown in Figure 8

Assumption:

When the command complete callback for “Idle” state transition is received, the PV framework assumes that all OMX input buffers and output buffers have been returned by the OMX component as mandated by the OMX specification.

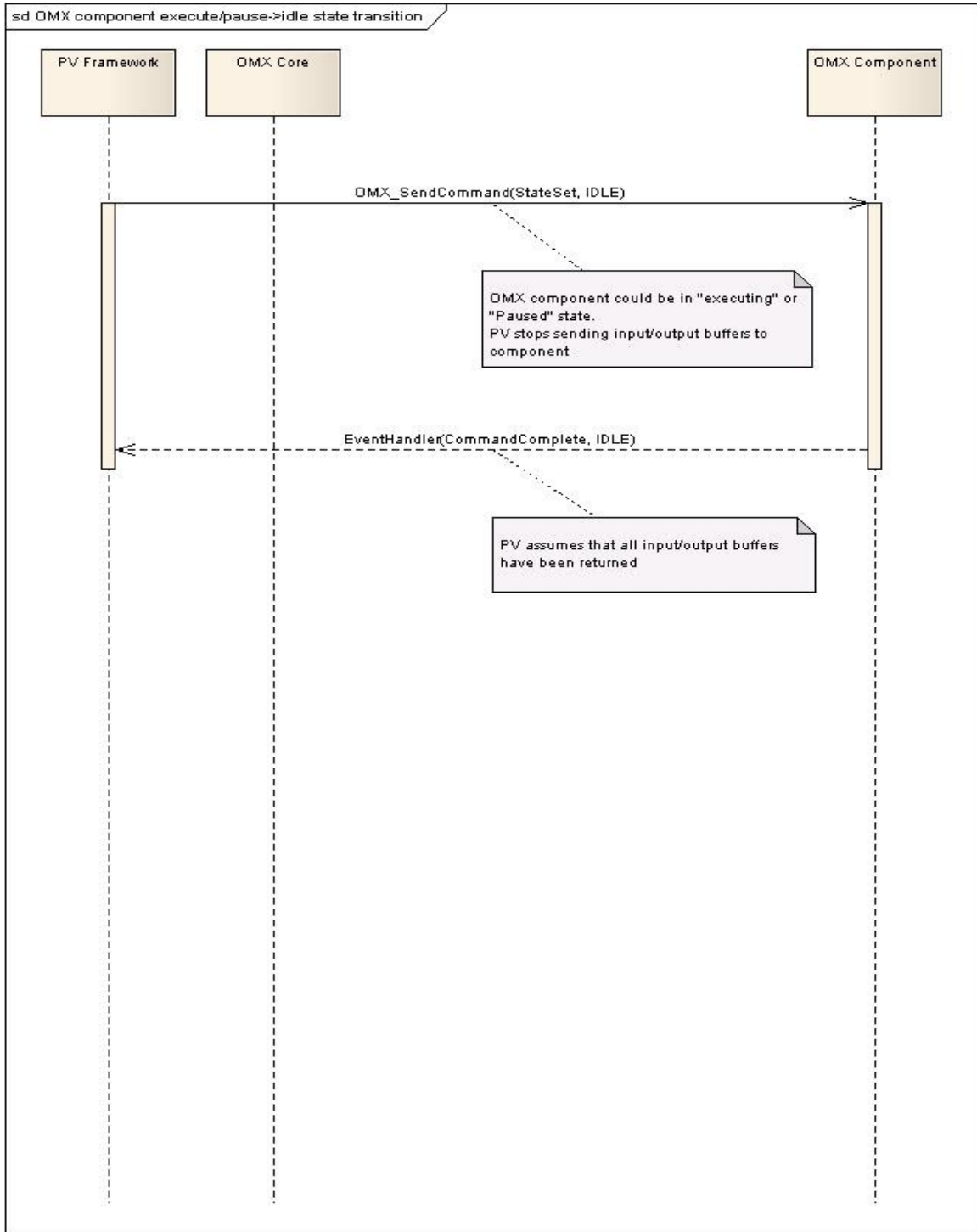


Figure 8: OMX component state transition from OMX_StateExecuting/Paused ->OMX_StateIdle

3.9. OMX Component Transition from Idle->Loaded State and De-initialization

When ending the interaction with an OMX component, the PV framework:

- Issues command to the OMX component to change state from OMX_StateIdle to OMX_StateLoaded via “OMX_SendCommand” call
- Issues a series of either “OMX_FreeBuffer” calls to the component. The call is used NumInputBuffer times for input port, and NumOutputBuffers for the output port.
- Waits for the EventHandler callback to arrive from the OMX component which notifies the framework that the state transition is complete (OMX_EventCmdComplete).
- Issues OMX_FreeHandle call to OMX core to release the handle of the component.

This interaction is shown in Figure 9.

Notes:

Before issuing the command to the component to make the OMX idle->loaded state transition, the PV framework waits for all the input/output buffers to be returned by the OMX component. Due to asynchronous processing of callbacks, some EmptyBufferDone/FillBufferDone callbacks may arrive after the callback that the OMX component transitioned from “executing” to “idle” state.

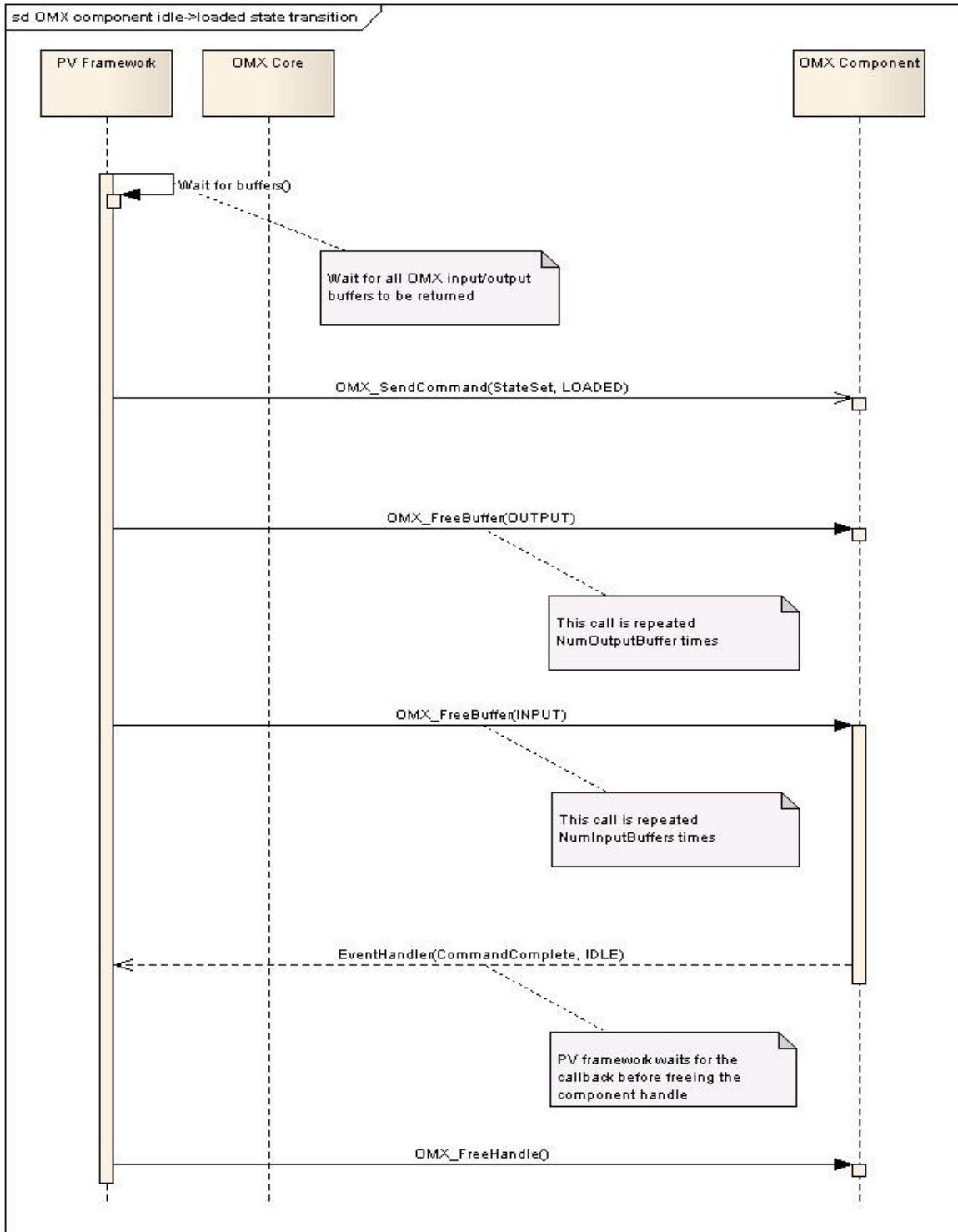


Figure 9: OMX component state transition from OMX_StateIdle->OMX_StateLoaded

3.10. OMX Core De-initialization

PV framework simply calls “OMX_Deinit()”.